



HISPEED LASER



A Leading Professional Manufacturer of Laser Machines

Company Profile

About Hispeed Laser

Dongguan Hispeed Laser Technology Ltd. is a leading high-tech manufacturer specializing in cutting-edge industrial laser equipments and innovative laser technology solutions. With a commitment to excellence, we deliver tailored laser processing solutions and state-of-the-art supporting facilities to a diverse clientele of domestic and international agents as well as end customers.

At Hispeed Laser Factory, we offer a comprehensive range of laser machines: Fiber/CO2/UV Laser Marking Machine, Laser Cutting Machine, Laser Cleaning Machine, Laser Welding Machine, Laser Spare Parts and Automation Systems.

We offer OEM/ODM services and customized solutions to meet the unique needs and expectations of our clients. Choose Hispeed Laser for professional, reliable laser solutions that cater to your specific requirements.



Contents

Laser Marking Machine Series

- Fiber Laser Marking Machine Series. 2-6
- CO2 Laser Marking Machine Series. 8-11
- UV Laser Marking Machine Series. 13-16
- Flying Laser Marking Machine Series. 18-20

Laser Cleaning Machine Series

- Pulse Laser Cleaning Machine. 22
- CW Laser Cleaning Machine. 23

Laser Welding Machine Series

- Jewelry Laser Welding Machine. 25
- Handheld Laser Welding Machine. 26
- Galvanometer Fiber Laser Welding Machine. 27
- Fiber Laser Welding Machine. 28
- Mould Laser Welding Machine. 29

Laser Cutting Machine Series

- CO2 Glass Tube Laser Cutting Machine. 31
- CO2 Metal Tube Precision Cutting Machine. 32
- Fiber Laser Cutting Machine for Metal. 33
- Fiber Laser Cutting Machine for Glass 34

- Customized Laser Machine 35**

- More Laser Models 36-37**

- Laser Spare Parts 38**

Fiber Laser Marking Machine Series

// Desktop Fiber Laser Marking Machine

// 3D Fiber Laser Marking Machine

// Space Saver Mini Laser Marking Machine

// Enclosed Desktop Fiber Laser Marking Machine

// Mini Handheld Fiber Laser Marking Machine

Desktop Fiber Laser Marking Machine

PRODUCT ADVANTAGE

- Marking on various metals and some plastic materials
- No consumables, Maintenance-free
- Stable performance, no faulty in long time working
- Long lifetime up to 100,000 hours
- High marking speed, high efficiency, high precision
- Software with powerful edit function but easy operation
- Air cooling design, compact structure

APPLICABLE INDUSTRY

- Metal Parts Knife Tools Marking
- Sanitary Ware Marking
- Electronic Component Marking
- Glass Watch Clock Marking
- Luggage Buckles Marking
- Jewelry Engraving Cutting
- Medical Tools Device Marking
- Auto Parts Marking
- Cables Wires Marking



TECHNICAL PARAMETERS

Model	LS-YLP Series
Laser Type	PULSE/MOPA
Laser Power	20W/30W/50W/100W
Wavelength	1064nm
Beam Quality	M2<1.5
Marking Range	50×50mm - 300×300mm(optional)
Max.Line Speed	7000mm/s
Min.Line Width	0.01mm
Min.Character	0.1mm
Repeatability	≥0.05mm
Cooling Mode	Air Cooling
Power Requirement	110V-240V 50Hz-60Hz
Machine Size	680×750×1540mm
Package Size	890×700×1130mm
Net Weight	109KG
Gross Weight	119KG

PRODUCT SAMPLES



3D Fiber Laser Marking Machine

PRODUCT ADVANTAGE

- Marking on various metals and some plastic materials
- No consumables, Maintenance-free
- Stable performance, no faulty in long time working
- Long lifetime up to 100,000 hours
- High marking speed, high efficiency, high precision
- Marking of curved surfaces
- Air cooling design, compact structure

APPLICABLE INDUSTRY

- Metal Parts Knife Tools Marking
- Sanitary Ware Marking
- Electronic Component Marking
- Glass Watch Clock Marking
- Luggage Buckles Marking
- Jewelry Engraving Cutting
- Medical Tools Device Marking
- Auto Parts Marking
- Cables Wires Marking



TECHNICAL PARAMETERS

Model	3D Laser Series
Laser Type	Fiber/UV/CO2
Wavelength	1064nm/355nm/10.6μm
Marking Range	≤200×200mm
Max.Line Speed	≤7000mm/s
Min.Line Width	0.01mm
Min.Character	0.1mm
Repeatability	≥0.05mm
Cooling Mode	Air Cooling
Power Requirement	110V-240V 50Hz-60Hz
Machine Size	750×680×154mm
Package Size	890×700×120mm
Net Weight	146KG
Gross Weight	153KG

PRODUCT SAMPLES



Space Saver Mini Fiber Laser Marking Machine

PRODUCT ADVANTAGE

- No need any maintenance, longlife, small volume
- Stable performance, long life time service
- Long life time up to 100,000 hours
- High marking speed, high efficiency, high precision
- No pollution, no noise, no consumable materials

APPLICABLE INDUSTRY

- Metal Parts Knife Tools Marking
- Sanitary Ware Marking
- Electronic Component Marking
- Glass Watch Clock Marking
- Luggage Buckles Marking
- Jewelry Engraving Cutting
- Medical Tools Device Marking
- Auto Parts Marking
- Cables Wires Marking



TECHNICAL PARAMETERS

Model	LS-YLP Series
Laser Type	PULSE/MOPA
Laser Power	20W/30W/50W/70W/100W
Wavelength	1064nm
Beam Quality	M2<1.5
Marking Range	≤300×300mm
Max.Line Speed	≤7000mm/s
Min.Line Width	0.01mm
Min.Character	0.1mm
Repeatability	≥0.05mm
Cooling Mode	Air Cooling
Power Requirement	110V-240V 50Hz-60Hz
Machine Size	530×550×700mm
Package Size	780×480×800mm
Net Weight	48KG
Gross Weight	58KG

PRODUCT SAMPLES



Enclosed Desktop Fiber Laser Marking Machine

PRODUCT ADVANTAGE

- Enclosed working area, reduce laser radiation, achieve safety laser marking process
- Safety window design reduce laser damage to the eyes effectively
- The front door can be opened, which can be flexibly used for long strip products
- Motorized Z Axis movement, improves operation efficiency

APPLICABLE INDUSTRY

- Jewelry Engraving & Cutting
- Metal Parts Knife Tools Marking
- Auto Parts Marking
- Medical Tools Marking
- Glasses Clock Marking
- Sanitary Ware Marking
- Cookware Marking
- Promotion Gift Marking



TECHNICAL PARAMETERS

Model	LS-YLP Series
Laser Type	PULSE/MOPA
Laser Power	20W/30W/50W
Wavelength	1064nm
Beam Quality	M2<1.5
Marking Range	≤175×175mm
Max.Line Speed	≤7000mm/s
Min.Line Width	0.01mm
Min.Character	0.1mm
Repeatability	±0.003mm
Cooling Mode	Air Cooling
Power Requirement	220V/50Hz or 110V/60Hz
Machine Size	480×740×750mm
Package Size	490×750×765mm
Net Weight	69KG
Gross Weight	79KG

PRODUCT SAMPLES



Mini Handheld Fiber Laser Marking Machine

PRODUCT ADVANTAGE

- Handheld & Portable, Wireless Marking
- No need to plug in, battery powered system, 24V lithium battery charging
- 6-8 hours long battery life
- Total weight 6 kg, the marking head is only 1.25 kg
- Perfect marking of large, heavy or difficult to handle work-pieces

APPLICABLE INDUSTRY

- Large Mechanical Nameplate Marking
- Metal Tools Marking
- Auto Parts Marking
- Sanitary Ware Marking
- Cookware Marking
- Aerospace Parts Marking



TECHNICAL PARAMETERS

Model	LS-YLP Series
Laser Type	PULSE
Laser Power	20W/30W/50W
Wavelength	1064nm
Beam Quality	M2≤1.4
Marking Range	110×110mm
Max.Line Speed	≤7000mm/s
Min.Line Width	0.1mm
Min.Character	0.15mm
Repeatability	±0.002mm
Cooling Mode	Air Cooling
Power Requirement	110V-240V 50Hz-60Hz
Machine Size	Controlling case: 250×135×195mm Marking head: 250×120×260mm
Package Size	580mm×520mm×260mm
Net Weight	11KG
Gross Weight	21KG

PRODUCT SAMPLES



CO2 Laser Marking Machine Series

// Desktop CO2 Laser Engraving Machine

// Dynamic CO2 Laser Engraving Machine

// Large Scan Field CO2 Laser Engraving Machine

// Portable CO2 Laser Engraving Machine

Desktop CO2 Laser Engraving Machine

PRODUCT ADVANTAGE

- Marking a variety of non-metal materials
- No maintenance and no consumables
- Long lifetime up to 60,000 hours
- High marking speed, high efficiency, high precision
- Software with powerful edit function but easy operation
- Air cooling design, compact structure

APPLICABLE INDUSTRY

- Non-metallic Materials
- Paper Card
- Rubber
- Acrylic
- Bamboo
- PU Leather
- Ceramics
- Resin
- Wood Crafts



TECHNICAL PARAMETERS

Model	LS-CO2 Series
Laser Type	CO2 Laser
Laser Power	30W/60W/100W
Wavelength	9.3μm/10.6μm
Beam Quality	M2<1.2
Marking Range	300×300mm
Min.Line Width	0.06mm
Min.Character	0.4mm
Repeatability	±0.01mm
Cooling Mode	Air Cooling/Water Cooling(>60W)
Power Requirement	110V-240V 50Hz-60Hz

PRODUCT SAMPLES



Dynamic CO2 Laser Engraving Machine

PRODUCT ADVANTAGE

- Large precision marking area upto 500x500mm
- Marking a variety of non-metal materials
- No maintenance and no consumables
- Water cooling design, stable working performance
- Software with powerful edit function but easy operation

APPLICABLE INDUSTRY

- PU Leather Marking
- Wood Bamboo Marking
- Paper Card Engraving Cutting
- Acrylic Marking
- Plastic Rubber Marking
- Ceramic Resin Marking
- Craft Gifts Marking
- Micro-hole Processing



TECHNICAL PARAMETERS

Model	LS-CO2 Series
Laser Type	CO2 Metal Laser Tube
Laser Power	60W
Wavelength	10.6μm
Beam Quality	M2<1.5
Marking Range	300×300mm/500×500mm
Min.Line Width	0.01mm
Min.Character	0.1mm
Repeatability	±0.01mm
Cooling Mode	Water Cooling
Power Requirement	110V-240V 50Hz-60Hz

PRODUCT SAMPLES



Large Scan Field CO2 Laser Engraving Machine

PRODUCT ADVANTAGE

- Marking a variety of non-metal materials
- No maintenance and no consumables
- Long lifetime up to 60,000 hours
- High marking speed, high efficiency, high precision
- Software with powerful edit function but easy operation
- Water cooling design, compact structure

APPLICABLE INDUSTRY

- PU Leather Marking
- Wood Bamboo Marking
- Paper Card Engraving Cutting
- Acrylic Marking
- Plastic Rubber Marking
- Ceramic Resin Marking
- Craft Gifts Marking
- Micro-hole Processing
- Silicon Wafer Marking Processing



TECHNICAL PARAMETERS

Model	LS-CO2 Series
Laser Type	Coherent RF Metal Tube CO2
Laser Power	100W/150W/200W/250W/300W
Wavelength	10.6μm
Beam Quality	M2<1.5
Marking Range	400×400mm/600×600mm/800×800mm
Max.Line Speed	≤5000mm/s
Min.Line Width	0.01mm
Min.Character	0.1mm
Repeatability	±0.02mm
Cooling Mode	Water Cooling
Power Requirement	110V-240V 50Hz-60Hz

PRODUCT SAMPLES



Portable CO2 Laser Engraving Machine

PRODUCT ADVANTAGE

- Marking a variety of non-metal materials
- No maintenance and no consumables
- Long lifetime up to 50,000-60,000 hours
- High marking speed, high efficiency, high precision
- Software with powerful edit function but easy operation
- Air cooling design, small volume

APPLICABLE INDUSTRY

- PU Leather Marking
- Wood Bamboo Marking
- Paper Card Engraving Cutting
- Acrylic Marking
- Plastic Rubber Marking
- Ceramic Resin Marking
- Craft Gifts Marking
- Micro-hole Processing
- Silicon Wafer Marking Processing



TECHNICAL PARAMETERS

Model	LS-CO2 Series
Laser Type	CO2 Laser
Laser Power	30W/60W
Wavelength	9.3μm/10.6μm
Beam Quality	M2<1.2
Marking Range	110×110mm
Min.Line Width	0.06mm
Min.Character	0.4mm
Repeatability	±0.01mm
Cooling Mode	Air Cooling/Water Cooling(>60W)
Power Requirement	110V-240V 50Hz-60Hz

PRODUCT SAMPLES



UV Laser Marking Machine Series

- // Desktop UV Laser Marking Machine
- // Full Enclosed UV Laser Marking Machine
- // Integrated UV Laser Marking Machine
- // Mini UV Laser Marking Machine

Desktop UV Laser Marking Machine

PRODUCT ADVANTAGE

- Wide range of application
- No maintenance and no consumables
- Water cooling design, stable performance
- High marking speed, high efficiency, high precision
- Software with powerful edit function but easy operation
- Short wavelength, high single-photon energy

APPLICABLE INDUSTRY

- Metal and Non-metal Materials
- Glass Marking
- LCD Screen, Plasma Screen Marking
- Thin Ceramic Marking
- Silicon Chips Marking
- IC Grain Marking
- Polymer Film Marking
- Auto Parts Marking
- Other High Value-added Products Marking



TECHNICAL PARAMETERS

Model	LS-UV Series
Laser Type	UV Laser
Laser Power	3W/5W/10W
Wavelength	355nm
Beam Quality	M2<1.3
Marking Range	≤300×300mm(Optional)
Max.Line Speed	≤5000mm/s
Min.Line Width	0.01mm
Min.Character	≥0.05mm
Repeatability	±2%rms
Cooling Mode	Air Cooling/Water Cooling
Power Requirement	110V-240V 50Hz-60Hz

PRODUCT SAMPLES



Full Enclosed UV Laser Marking Machine

PRODUCT ADVANTAGE

- 3 Doors can be opened, front and left and right
- No maintenance and no consumables
- Closed work, safe eye-protective
- High marking speed, high efficiency, high precision
- Software with powerful edit function but easy operation
- Short wavelength, high single-photon energy

APPLICABLE INDUSTRY

- Metal and Non-metal Materials
- Glass Marking
- LCD Screen, Plasma Screen Marking
- Thin Ceramic Marking
- Silicon Chips Marking
- IC Grain Marking
- Polymer Film Marking
- Auto Parts Marking
- Other High Value-added Products Marking
- Silicon Wafer Cutting



TECHNICAL PARAMETERS

Model	LS-UV Series
Laser Type	UV Laser
Laser Power	3W/5W/10W
Wavelength	355nm
Beam Quality	M2<1.3
Marking Range	≤300×300mm(Optional)
Max.Line Speed	≤5000mm/s
Min.Line Width	0.01mm
Min.Character	≥0.05mm
Repeatability	±2%rms
Cooling Mode	Air Cooling/Water Cooling
Power Requirement	110V-240V 50Hz-60Hz

PRODUCT SAMPLES



Integrated UV Laser Marking Machine

PRODUCT ADVANTAGE

- Small Volume
- No maintenance and no consumables
- Water cooling design, stable performance
- High marking speed, high efficiency, high precision
- Software with powerful edit function but easy operation
- Short wavelength, high single-photon energy

APPLICABLE INDUSTRY

- Metal and Non-metal Materials
- Glass Marking
- LCD Screen, Plasma Screen Marking
- Thin Ceramic Marking
- Silicon Chips Marking
- IC Grain Marking
- Polymer Film Marking
- Auto Parts Marking
- Other High Value-added Products Marking



TECHNICAL PARAMETERS

Model	LS-UV Series
Laser Type	UV Laser
Laser Power	3W/5W/10W
Wavelength	355nm
Beam Quality	M2<1.3
Marking Range	≤300×300mm(Optional)
Output Power	10-100%
Min.Line Width	0.01mm
Min.Character	≥0.05mm
Repeatability	±0.02mm
Cooling Mode	Air Cooling/Water Cooling
Power Requirement	110V-240V 50Hz-60Hz

PRODUCT SAMPLES



Mini UV Laser Marking Machine

PRODUCT ADVANTAGE

- Small and compact mode
- No maintenance and no consumables
- Air cooling design, stable performance
- High marking speed, high efficiency, high precision
- Software with powerful edit function but easy operation
- Short wavelength, high single-photon energy

APPLICABLE INDUSTRY

- Metal and Non-metal Materials
- Glass Material
- LCD Screen, Plasma Screen Marking
- Thin Ceramic Marking
- Silicon Chips Marking
- IC Grain Marking
- Polymer Film Marking
- Auto Parts Marking
- Other High Value-added Products Marking



TECHNICAL PARAMETERS

Model	LS-UV Series
Laser Type	UV Laser
Laser Power	3W/5W/10W
Wavelength	355nm
Beam Quality	M2<1.3
Marking Range	≤300×300mm(Optional)
Output Power	10-100%
Min.Line Width	0.01mm
Min.Character	≥0.05mm
Repeatability	±0.02mm
Cooling Mode	Air Cooling/Water Cooling
Power Requirement	110V-240V 50Hz-60Hz

PRODUCT SAMPLES



Online Flying Laser Marking Machine Series

// Fiber Online Flying Laser Marking Machine

// CO2 Online Flying Laser Marking Machine

// UV Online Flying Laser Marking Machine

Fiber Online Flying Laser Marking Machine

PRODUCT ADVANTAGE

- Suspension split case, flexible design
- Smart touch screen control system
- No consumables, free maintenance
- Stable performance, no faulty in long time working
- High marking speed
- Software with powerful edit function but easy operation

APPLICABLE INDUSTRY

- Metal Parts Knife Tools Marking
- Sanitary Ware Marking
- Electronic Component Marking
- Glass Watch Clock Marking
- Luggage Buckles Marking
- Plastic Pipe Coding
- Medical Tools Device Marking
- Auto Parts Marking
- Cables Wires Marking



TECHNICAL PARAMETERS

Model		Fiber Laser
Laser Power		30W/50W/100W
Wavelength		1064nm
Beam Quality		M2<1.5
Marking Range		≤200×200mm
Min.Line Width		0.01mm
Min.Character		≥0.05mm
Repeatability		±0.02mm
Cooling Mode		Air Cooling
Power Requirement		110V-240V 50Hz-60Hz

PRODUCT SAMPLES



CO2 Online Flying Laser Marking Machine

PRODUCT ADVANTAGE

- Suspension split case, flexible design
- Smart touch screen control system
- No consumables, free maintenance
- Stable performance, no faulty in long time working
- High marking speed
- Software with powerful edit function but easy operation

APPLICABLE INDUSTRY

- PU Leather Marking
- Wood Bamboo Marking
- Paper Card Engraving Marking
- Acrylic Marking
- Plastic Rubber Marking
- Ceramic Resin Marking
- Craft Gifts Marking
- Beverage Packaging Coding
- Drug Packaging Marking



TECHNICAL PARAMETERS

Model	CO2 Laser
Laser Power	30W/60W
Wavelength	9.3μm/10.6μm
Beam Quality	M2<1.5
Marking Range	≤200×200mm
Min.Line Width	0.06mm
Min.Character	0.4mm
Repeatability	±0.01mm
Cooling Mode	Air Cooling/Water Cooling
Power Requirement	110V-240V 50Hz-60Hz

PRODUCT SAMPLES



UV Online Flying Laser Marking Machine

PRODUCT ADVANTAGE

- Suspension split case, flexible design
- Smart touch screen control system
- No consumables, free maintenance
- Stable performance, no faulty in long time working
- High marking speed
- Software with powerful edit function but easy operation

APPLICABLE INDUSTRY

- Metal and Non-metal Materials
- Glass Material
- LCD Screen, Plasma Screen Marking
- Thin Ceramic Marking
- Silicon Chips Marking
- IC Grain Marking
- Polymer Film Marking
- Auto Parts Marking
- Other High Value-added Products Marking



TECHNICAL PARAMETERS

Model		UV Laser
Laser Power		3W/5W/10W
Wavelength		355nm
Beam Quality		M2<1.5
Engraving Depth		1.2mm(depends)
Marking Range		≤300×300mm
Min.Line Width		0.01mm
Min.Character		≥0.05mm
Repeatability		±0.01mm
Cooling Mode		Air Cooling/Water Cooling
Power Requirement		110V-240V 50Hz-60Hz

PRODUCT SAMPLES



Laser Cleaning Machine Series

// Pulse Laser Cleaning Machine

// CW Laser Cleaning Machine

Pulse Laser Cleaning Machine

PRODUCT ADVANTAGE

- Removal of surface coating on metal or workpiece
- Quickly remove rust, oxide scale and dry paint
- Remove resin, grease, residual glue, dust, dirt and production residues
- Dirty oil removal after the production and processing of precision parts
- Cultural relic cleaning, outside the building
- Nuclear power components are quickly cleaned during maintenance

APPLICABLE INDUSTRY

- Parts Industry
- Mold Industry
- Metal Industry
- Automobile Industry
- Machinery Industry
- Stainless Steel Industry
- Rail Transit Industry
- Cultural Relics Cleaning Industry
- Electronic Components Industry



TECHNICAL PARAMETERS

Laser Type	Pulse Fiber Laser
Laser Power	20W/30W/50W/100W/200W
Wavelength	1064nm
Cooling Method	Air Cooling
Length of Optical Cable	3M (or customized)
Weight of Cleaning Head	2KG
Move Method	Handheld
Machine Dimension	200×500×470mm (20W-50W)
Net Weight	30KG (20-50W)
Supply Voltage	110V~240V 50Hz~60Hz

PRODUCT SAMPLES



CW Laser Cleaning Machine

PRODUCT ADVANTAGE

- Removal of surface coating on metal or workpiece
- Quickly remove rust, oxide scale and dry paint
- Remove dirty oil after the production and production residues
- Dirty oil removal after the production and processing of precision parts
- Nuclear power components are quickly cleaned during maintenance
- Cultural relic cleaning, outside the building

APPLICABLE INDUSTRY

- Parts Industry
- Mold Industry
- Metal Industry
- Automobile Industry
- Machinery Industry
- Stainless Steel Industry
- Rail Transit Industry
- Cultural Relics Cleaning Industry
- Electronic Component Industry



TECHNICAL PARAMETERS

Laser Type	CW Fiber Laser
Laser Power	1500W/2000W/4000W/6000W
Wavelength	1080nm
Cooling Method	Water Cooling
Length of Optical Cable	10M (or customized)
Weight of Cleaning Head	600g
Move Method	Handheld
Machine Dimension	450×950×800mm
Net Weight	110KG
Supply Voltage	110V~240V, 50Hz~60Hz

PRODUCT SAMPLES



Laser Welding Machine Series

// Jewelry Laser Welding Machine

// Handheld Laser Welding Machine

// Galvanometer Fiber Laser Welding Machine

// Fiber Laser Welding Machine

// Mould Laser Welding Machine

Jewelry Laser Welding Machine

PRODUCT ADVANTAGE

- Small and Portable
- Support 24 hours continuous work
- No deformation after welding
- Firmly welding quality
- Melting fully, without trachoma, no trace repair
- Subtle laser spot leads subtle welding quality

APPLICABLE INDUSTRY

- Lithium Battery Laser Welding
- Watch Glasses Laser Welding
- Battery Industry Laser Welding
- Mechanical Parts Laser Welding
- Mobile Phone Parts Laser Welding
- Gold Jewelry Repair Laser Welding
- Precision Connector Laser Welding
- Electronic Components Laser Welding
- Communication Industry Laser Welding



TECHNICAL PARAMETERS

Model	HSW Series			
Laser Type	YAG Laser			
Laser Power	60W	100W	150W	200W
Laser Energy	45J	75J	120J	160J
Equipment Power Consumption	300W	500W	750W	1000W
Pulse Width	0.1-5ms			
Frequency	0-10Hz			
Spot Size	0.1-3mm			
Visual System	Microscope+CCD			
Operation Method	Touch Control			
Touch Screen Size	10.8"			
Cooling Method	Water Cooling			
Machine Weight	35KG	35KG	37KG	39KG
The Output Voltage	110-240V 50Hz-60Hz			

PRODUCT SAMPLES



Handheld Laser Welding Machine

PRODUCT ADVANTAGE

- High electro-optic conversion efficiency
- Anti-hyperreaction ability
- High efficiency for thin plate welding
- Thick plate deep melting without splash
- The output fiber length can be customized
- Wide modulation frequency range

APPLICABLE INDUSTRY

- Hotel Supplies
- Electrical Industry
- Electronic Industry
- Decorative Screen
- High-end Furniture
- Advertising Industry
- Automobile Industry
- Medical Device Industry
- Environmental Protection Industry



TECHNICAL PARAMETERS

Model	Fiber Laser
Laser Power	1500W/2000W/3000W/6000W
Center Wavelength	1080nm
Output Power Stability	< 2%
Output Fiber Length	10m (can be customized)
Cooling Method	Water Cooling
Cooling Water Temperature	20-25°C
Average Consumed Power	3~6KW/Hour
Collimated Focal Length	50mm
Focal Spot Diameter	0.2~3.0mm
Weight of Welding Head	600g

PRODUCT SAMPLES



Galvanometer Fiber Laser Welding Machine

PRODUCT ADVANTAGE

- Average power, high frequency and high speed processing
- Can weld a variety of materials, such as aluminum or steel
- High power stability, long life time
- Integrated system with super welding quality
- Humanized design and easy to operate
- Safety and over temperature protection

APPLICABLE INDUSTRY

- Sensor
- Connector
- Battery Cap
- Battery Tabs
- Smart Watch
- Instrument Valve
- Metal Phone Case
- Hard Drive Welding
- Metal Capacitor Shell



TECHNICAL PARAMETERS

Model	QCW Fiber Laser
Wavelength	1064nm
Max Welding Thickness	0.1~0.2mm
Total Power	≤13KW
Voltage	110V-240V 50Hz-60Hz
Pulse Width	0.3~20ms
Frequency	1~100Hz
Spot Adjustable Range	0.2~2mm
Positioning	Red Indicator
Repeatability	±0.01mm
Control System	PLC or PC (CNC2000)
Machine Size	660mm*770mm*1480mm

PRODUCT SAMPLES



Fiber Laser Welding Machine

PRODUCT ADVANTAGE

- Fast welding speed, deep penetration
- Minimal deformation, aesthetically pleasing weld lines
- Welding control system is stable and user-friendly
- It can achieve arbitrary programming of continuous welding points, straight lines, circles, and arcs.
- Electric translation stage, high repeatability positioning accuracy

APPLICABLE INDUSTRY

- Electronics
- Automobiles
- Home Appliances
- Metal Processing
- Tool Manufacturing
- Precision Components



TECHNICAL PARAMETERS

Model		Fiber Laser	
Laser Wavelength		1064nm	
Output Fiber Length		10m	
Maximum Laser Power	1000W	1500W	2000W
Rated Power	6KW	7KW	8KW
Power Configuration	220V/50Hz	220V/50Hz	380V/50Hz
Light Spot Adjustment Range	0.1-5mm	0.1-5mm	0.1-5mm
Laser Frequency	1-10000Hz	1-10000Hz	1-10000Hz
Cooling System	CW1000	CW1500	CW2000
Aiming and Positioning	CCD, Red Light		
XYZ Travel	500*300*300mm		
Accuracy	0.05mm		
Maximum Moving Speed	200mm/s		

PRODUCT SAMPLES



Mould Laser Welding Machine

PRODUCT ADVANTAGE

- High welding energy, ensuring consistent welding performance
- Laser head can rotate 360°
- Corrosion-resistant, high-temperature resistant
- Automatic shading system, protecting the eyes
- Large working surface, suitable for mould placement with an electric lift worktable

APPLICABLE INDUSTRY

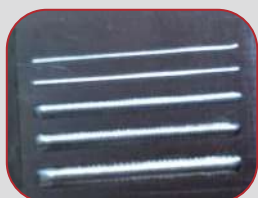
- Jewelry
- Auto Parts
- Plastic Molds
- Rubber Molds
- Hardware Molds
- Precision Casting
- Precision Instruments
- Hardware Components
- Electronic Components



TECHNICAL PARAMETERS

Model	Fiber Laser		
Laser Wavelength	1064nm		
Condenser Cavity Reflector	Ceramic Condenser Cavity	Dual-Lamp Condenser Cavity	Dual-Lamp Condenser Cavity
Maximum Laser Power	200W	400W	600W
Rated Power	8KW	12KW	16KW
Pulse Width	0.1-10ms		
Light Spot Adjustment Range	0.2-2mm	0.3-3mm	0.3-3.5mm
Laser Frequency	1-20Hz	1-30Hz	1-30Hz
Cooling System	1.5P	3P	5P
Aiming and Positioning	CCD or Microscope		

PRODUCT SAMPLES



Laser Cutting Machine Series

// CO2 Glass Tube Laser Cutting Machine

// CO2 Metal Tube Precision Cutting Machine

// Fiber Laser Cutting Machine for Metal

// Fiber Laser Cutting Machine for Glass

CO2 Glass Tube Laser Cutting Machine

PRODUCT ADVANTAGE

- Clean cut edges without burr
- Non-contact material processing without distortion
- High stability, support long period working
- Laser power supply stability, durability, safety
- Convenient operation, saving material
- Highly controllable, repeatable and accurate processing

APPLICABLE INDUSTRY

- Handicraft Industry
- Paper Products Industry
- Garment Embroidery Industry
- Leather Products Industry
- Bamboo and Wood Products Industry
- Electronic and Electrical Industry
- Advertising and Decoration Industry
- Printing and Packaging Industry
- Mobile Phone Parts Industry



TECHNICAL PARAMETERS

Model	Sealed CO2 Glass Laser Tube
Working Area	640,960,1080,1280,1390,1480,1610,1325,1625,1825 (optional)
Work Platform	Honey comb or Blade worktable (optional)
Cutting Head	Single or Double (optional)
Laser Power	80W/100W/130W/150W/300W and more (optional)
Whole Power	<1250W
Operating Temperature	0~45°C(32~113°F)
Operating Humidity	5%~95%
Repeating Precision	±0.05mm
Cooling Mode	Water Cooling Protection System
Working Voltage	110V-240V 50Hz-60Hz

PRODUCT SAMPLES



CO2 Metal Tube Precision Cutting Machine

PRODUCT ADVANTAGE

- RF Metal Tube Laser, no consumable required
- High power stability, can be used for a long period
- Highly controllable, repeatable and accurate processing
- Suitable for high-precision electronic industry demand cutting

APPLICABLE INDUSTRY

- Touch Screen
- Display Panels
- PCB Circuit Boards
- Mobile Phone Housings
- Plastic Cover Sheets
- High Precision Electronics
- Non-metallic Materials
- Electrically Insulated Flexible Boards



TECHNICAL PARAMETERS

Model	RF CO2 Metal Tube
Working Area	640,960,1080,1280,1390,1480,1610,1325,1625,1825 (optional)
Work Platform	Honey comb or Blade worktable (optional)
Cutting Head	Single or Double (optional)
Laser Power	60W/100W/150W/200W and more (optional)
Whole Power	<1250W
Operating Temperature	0~45°C(32~113°F)
Operating Humidity	5%~95%
Repeating Precision	±0.05mm
Cooling Mode	Ware Cooling and Protection System
Working Voltage	110V-240V 50Hz-60Hz

PRODUCT SAMPLES



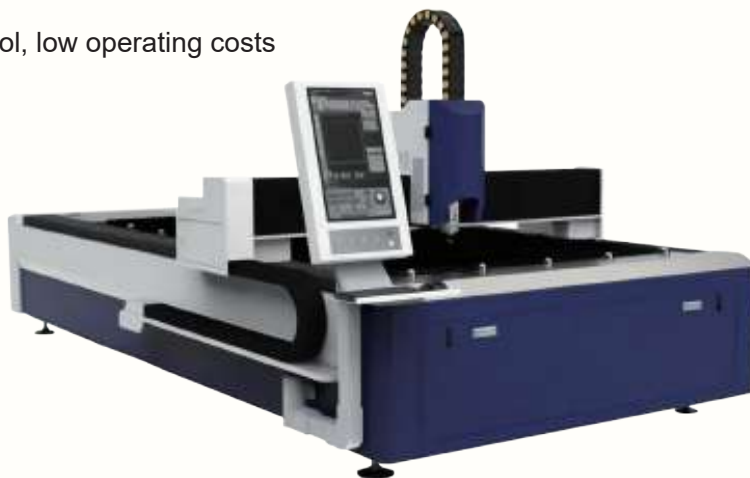
Fiber Laser Cutting Machine for Metal

PRODUCT ADVANTAGE

- Good dynamics & cutting ability
- Open structure without cover, showing the cutting processing completely
- High processing accuracy, favorable dynamic characteristics
- Professional digital control system, simple and intelligent operation
- Reduced gas consumption through precision control, low operating costs

APPLICABLE INDUSTRY

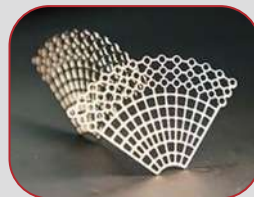
- Auto Parts
- Sports Equipment
- Lighting and Lamps
- Hardware Industry
- Sheet Metal Processing
- Metal Processing Industry
- Machinery and Equipment
- Kitchenware and Bathroom



TECHNICAL PARAMETERS

Model	Fiber Laser				
Machine Type	3015	4020	6020	6025	8025
Laser Source Power	1500w/2000w/3000w/6000w/12000w (optional)				
Working Area (mm)	3000×1500mm	4000×2000mm	6000×2000mm	6000×2500mm	8000×2500mm
Positioning Accuracy (X/Y)	±0.05mm				
Repeatability (X/Y)	0.03mm				
Max. Positioning Speed (X/Y)	120m/min	100m/min	100m/min	100m/min	100m/min
Max. Acceleration (X/Y)	1.2G	1.0G	1.0G	1.0G	1.0G
Dimensions (L×W×H) (mm)	5000×2300×1900	6000×2800×1900	8500×2800×1900	8500×4200×2400	10500×4200×2400

PRODUCT SAMPLES



Fiber Laser Cutting Machine for Glass

PRODUCT ADVANTAGE

- High single-photon energy
- Water cooling design, stable performance
- High drilling speed, high efficiency, high precision
- Software with powerful edit function but easy operation
- Wide range of applications, No consumables, free maintenance

APPLICABLE INDUSTRY

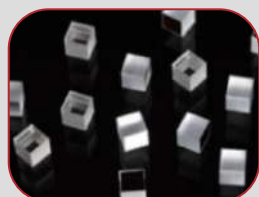
- LCD Screen
- Plasma Screen
- Glass Industry
- IC Grain Marking
- Thin Ceramic Marking
- Silicon Chips Marking



TECHNICAL PARAMETERS

Model		Fiber Laser			
M²	1.4				
Pulse Energy	0.58mJ@12ns				
Pulse Width	6ns-100ns				
Cooling Model	Water Cooling				
Drilling Diameter(mm)	10	20	30	40	50
Glass Thickness(mm)	Drilling Time(s)				
1	1.9	4.0	5.7	7.8	9.7
2	3.0	6.4	9.8	14	19.8
3	3.5	8.0	11.8	24	32
4	4.8	9.4	14	28	40
5	6.1	12.3	20	32	46
...

PRODUCT SAMPLES



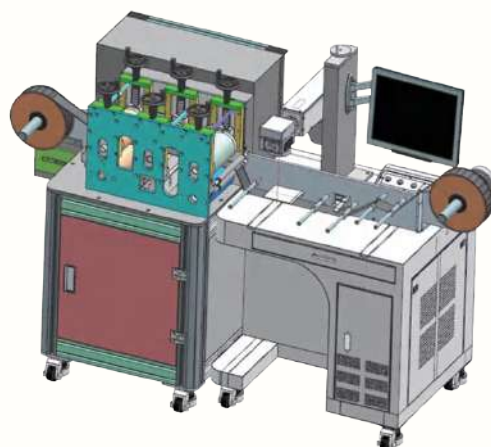
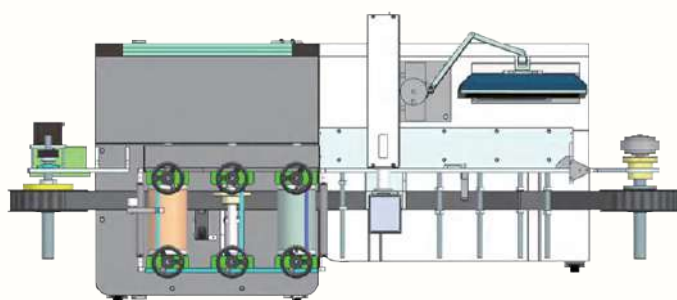
Customized Laser Machine

PRODUCT FEATURE

Unleash the power of customized laser marking solutions tailored to your unique needs. Our customized laser marking machines are meticulously crafted to meet each customer's unique specifications.

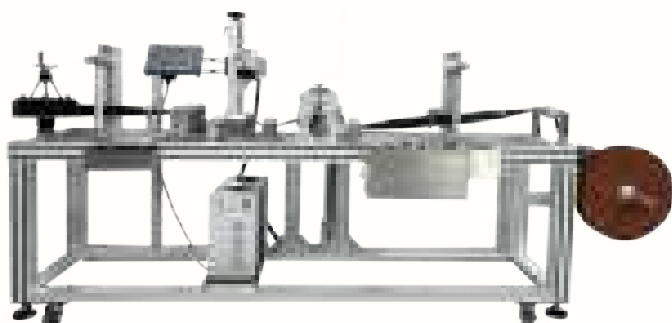
Clients enjoy the flexibility of choosing the ideal laser source, marking head, workbench, and control system components tailored to their production demands.

Moreover, we can personalize both the aesthetics and functionalities of the machine to perfectly align with our specific production requirements.

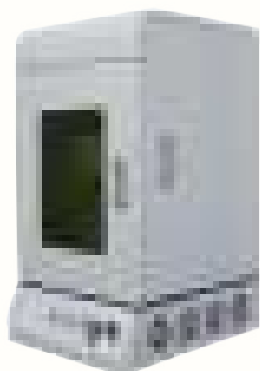


PRODUCT ADVANTAGE

- Reduce manual operation and lower labor costs
- The production line runs 24 hours a day, highly efficient
- Automate processing and improve overall production efficiency
- Stable machine performance reduces the risk of production interruptions
- Diversity can meet the application needs of different industries and scenarios
- Suitable for food printing, pharmaceutical printing, cigarette coding, wine industry, wire and cable and various production lines.



More Laser Models



Mini Enclosed Fiber Laser Marker



Mini Laser Marker with Enclosure



Mini Folding Fiber Laser Marker



Portable Laser Marker



Laser Marker with CCD
and Small Conveyor



Desktop Laser Marker with Enclosure



Six-station Laser Marker



Four-station Laser Marker



Laser Marker with Enclosure

More Laser Models



Handheld Fiber Laser Marker



Handheld Fiber Laser Marker



Handheld Fiber Laser Marker



Laser Marker with XY Axis



Dynamic Glass Tube CO2 Laser Marker



RF Metal Tube CO2 Laser Marker



Crane Type Laser Welder



CW Laser Welder



QCW Laser Welder

Laser Spare Parts



Laser Source



Control Board



Galvo Scanner



F-theta Lens



Power Supply



Red Light Indicator



Laser Glass Tube



Fume Extractor



XYZ Work Table



Rotary Fixture



Rotary Table For Pen Marking



XYZ Axis Moving Work Plate



HiSpeed
LASER SYSTEM

Dongguan Hispeed Laser Technology Ltd.

No 26th, Hengxi Liulu, Hengkeng, Liaobu,
Dongguan, Guangdong, China, 523413

www.hispeedlaser.com
info@hispeedlaser.com

+86-769-3320 1157
+86 138 2923 3984
+86 137 1335 8285

